



Voice-Mail Batch Appending Program

HTH Engineering, Inc. 1827 Juanita Court, Clearwater, FL 33764

© 2001 All Rights Reserved WEB: <http://www.startstop.com> E-MAIL: jwinner@mindspring.com

Features/Specifications

- Appends (“Melts”) .WAV files into a single outputted file in two modes:
 - Parameter-driven (specified by *.txt file)
 - Manual Mode (pre-defined directory)
- Extremely fast binary-appending technique assures quick melts.
- Number of files melted at once limited only by hard drive space.
- Melt directories can be specified from any source (e.g. local or network drive)
- Silence, Tone, or None separator automatically inserted between melted files
- Progress and file statistics displayed during melt or batch operation
- Optional Batch File may be automatically executed upon completion of a melt



Voice-Mail Batch Appending Program

HTH Engineering, Inc. 1827 Juanita Court, Clearwater, FL 33764
© 2001 All Rights Reserved WEB: <http://www.startstop.com> E-MAIL: jwinner@mindspring.com

Main Screen

Configure set-up options here

As Parameter file specifies multiple files, Successive "Job Numbers will be shown.

Real Time Clock Shows program is ready

Unique time-stamped Filename of melted file

Shows File currently being Melted

% Completion Gauge

Current total size of file melting in progress, in Megabytes

Melt buttons allow user to either melt based on a Parameter file, or manually melt from any directory.



Voice-Mail Batch Appending Program

HTH Engineering, Inc. 1827 Juanita Court, Clearwater, FL 33764
© 2001 All Rights Reserved WEB: <http://www.startstop.com> E-MAIL: jwinner@mindspring.com

Set Up Options Screen

Clicking this button restores default paths as shown in this illustration.

Folder Locations for MANUAL MELT

Source Folder for Individual WAV Files
c:\File Converter\Input\

Destination Folder for Melted WAV File
c:\File Converter\Output\

Folder Location of optional batch (*.bat) file to launch when melt is complete
c:\BatchFolder\

Folder Location for PARAMETER FILE (Config.txt)

c:\Config\
(Source/destination folders, min/max # of files, and optional batch automatically invoked from config.txt contents)

GLOBAL SETTINGS

File Separator Type: Silence

Automatically delete files that have been melted

Select Item and then click Change, or else type the new path directly into the appropriate box

Change Restore Default Directories

Update/Save Configuration and EXIT Cancel

You can type in the exact path manually and then click here
-or-

Click on the Option Button for the Path you want to change,
and then click the Change Button.... (see next page)

Select Silence,
Tone, or None.

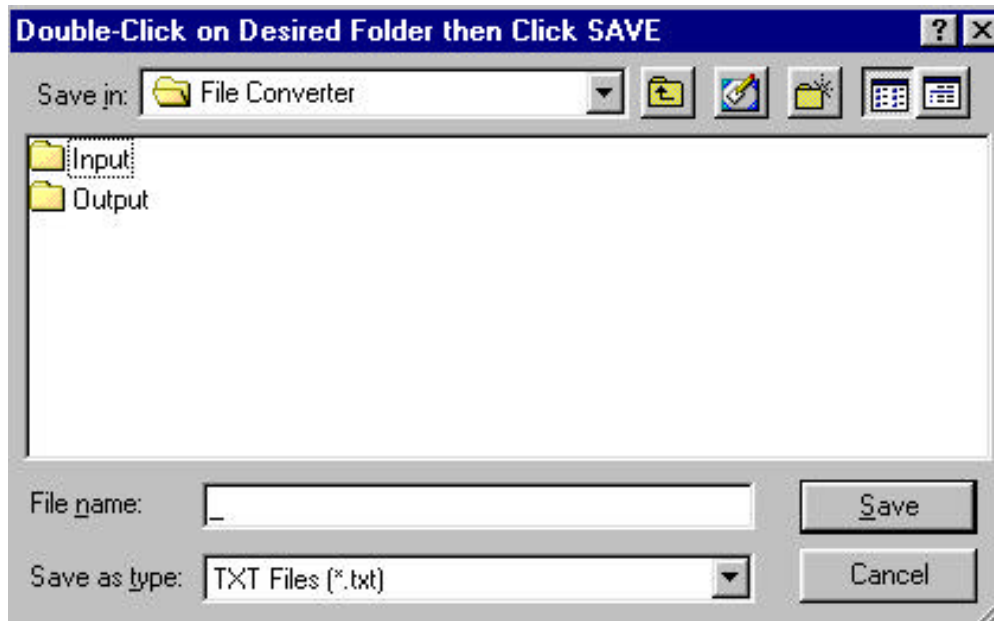
Check here to
automatically delete
files already melted



Voice-Mail Batch Appending Program

HTH Engineering, Inc. 1827 Juanita Court, Clearwater, FL 33764
© 2001 All Rights Reserved WEB: <http://www.startstop.com> E-MAIL: jwinner@mindspring.com

Setting Paths



Change Button Method for setting or creating Paths:

-You can navigate anywhere on your local computer or LAN Neighborhood using the “Save In” selector, Up Folder Arrow, and Main Window.

Once you have found the folder that is the destination path:

-DOUBLE CLICK on the folder that you want be set as the path, and then CLICK ON THE SAVE BUTTON. Do not alter the File name “_” underscore symbol..just click on SAVE.

-Your desired path will be saved, and the Path window selected by the option button will be changed to match.

If you are browsing to a drive (e.g. a network drive), but the destination path or folder is not yet created:

(Please see next page...)

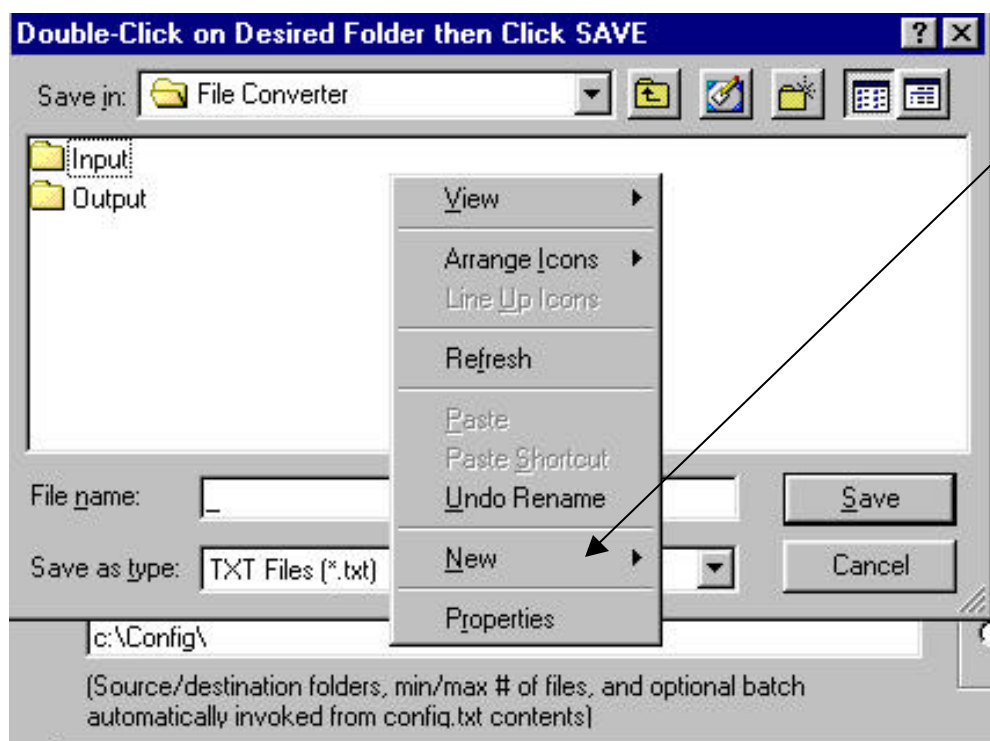


Voice-Mail Batch Appending Program

HTH Engineering, Inc. 1827 Juanita Court, Clearwater, FL 33764
© 2001 All Rights Reserved WEB: <http://www.startstop.com> E-MAIL: jwinner@mindspring.com

Setting Paths (continued)

If you are browsing to a drive (e.g. a network drive), but the Destination path or folder is not yet created:



Right click in a blank area, then Select New...Folder...

Create the folder you want as a Destination path, then follow the Double-clicking procedure shown On the previous page.



Voice-Mail Batch Appending Program

HTH Engineering, Inc. 1827 Juanita Court, Clearwater, FL 33764
© 2001 All Rights Reserved WEB: <http://www.startstop.com> E-MAIL: jwinner@mindspring.com

Parameter File Structure

```
batch.txt - Notepad
File Edit Search Help
in=c:\tricity\source\
out=c:\tricity\dest\
min=2
max=5
batch=c:\tricity\batch\1.bat
end
in=c:\tricity\source1\
out=c:\tricity\dest1\
min=2
max=25
batch=c:\tricity\batch1\1.bat
end
```

Input directory to be melted

Output directory where melted file will go.

Minimum number of files that must be present before melting can start.

Maximum number of files to melt at any given time.

Optional Batch File Path and File Name to execute after melting. If no batch file is desired, leave blank (e.g. "batch=")

Terminator tag for this melt. Every Melt must end with "end"

- Parameter file can be any name, ending with ".txt" (example: "Config.txt" or "Batch.txt")
- The auto-parsing feature automatically scans and executes for commands in the file.
- Only one *.txt file is permitted at a time in the designated directory (PARAMETER FILE DIRECTORY specified in the Configure Set Up Options screen)
- ID Tags (e.g. in=, out=, min=, max=, end) must be as shown, no spaces, lower case.

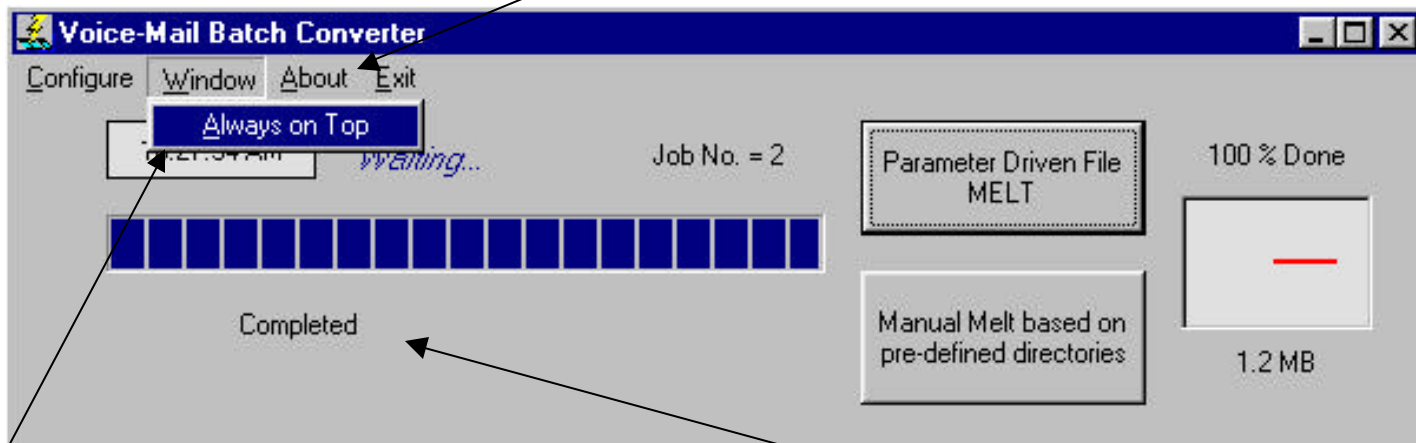


Voice-Mail Batch Appending Program

HTH Engineering, Inc. 1827 Juanita Court, Clearwater, FL 33764
© 2001 All Rights Reserved WEB: <http://www.startstop.com> E-MAIL: jwinner@mindspring.com

Other Features...

Click on "About" to show Program Version, and System Information about your PC



-User can select "Always on Top" operation by checking the box under "Window"

-This setting will be retained on subsequent launches of the program.

Screen shows "Completed" when melt(s) are done, for quick visual reference.



Voice-Mail Batch Appending Program

HTH Engineering, Inc. 1827 Juanita Court, Clearwater, FL 33764
© 2001 All Rights Reserved WEB: <http://www.startstop.com> E-MAIL: jwinner@mindspring.com

Other Features...(continued)

PROGRAM FOLDER CONTENTS

Name	Size	Type	Modified
Examples		File Folder	2/1/01 1:46 A
FileConvert.exe	100KB	Application	2/1/01 10:00
fileconverter1.cfg	1KB	CFG File	2/1/01 10:00
silence.wav	5KB	WAV File	2/1/01 10:00
tone.wav	5KB	WAV File	2/1/01 10:00
Uninst.isu	45KB	unInstall...	2/1/01 1:46 A

← **Config file must stay in same directory as the executable**

User can replace silence.wav and tone.wav files with any other type of sounds desired, as long as they are in the same format as the files being melted.