

Docking Station

for Digital Pocket Memo 9600/9620

LFH 9120



www.philips.com/dictation

EN	User manual	3	NL	Gebruikershandleiding	19
DE	Benutzerhandbuch	7	IT	Manuale di istruzioni	23
FR	Manuel de l'utilisateur	11	FI	Käyttöoppaasta	27
ES	Manual del usuario	15	SV	Användarhandboken	31

PHILIPS



Declaration of Conformity

Tested to comply with FCC standards
FOR HOME OR OFFICE USE

Model Number: LFH 9120
Trade Name: Philips Docking Station 9120
Responsible Party: Philips Speech Processing
Address: 64 Perimeter Center East, Atlanta, GA 30346, USA
Telephone number: (888) 260-6162
Website: www.philips.com/dictation

This device complies with Part 15 of the FCC Rules. Operation is subject to the following two conditions:

- 1) This device may not cause harmful interference.
- 2) This device must accept any interference received, including interference that may cause undesired operation.

User manual

ENGLISH

1	Introduction	4
1.1	Features	4
1.2	Package contents	4
1.3	Overview	4
2	Installation	5
3	Operation	5
3.1	Recording directly to the PC from the docking station	5
3.2	Recharging the batteries of the Digital Pocket Memo	5
3.3	Transferring dictation files to a PC	6

1 Introduction

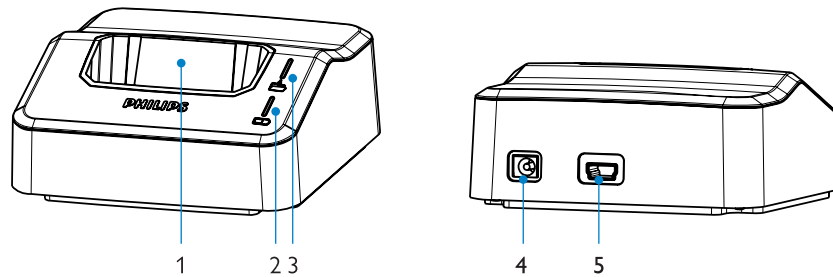
1.1 Features

- Upload dictation files from your Digital Pocket Memo directly to a PC
- The Fast Recharge feature recharges the batteries in your Digital Pocket Memo while in the docking station, even when the unit is not switched on
- Record dictations directly to a connected PC while your Digital Pocket Memo is in the Docking Station

1.2 Package contents

- Docking Station 9120
- Power Supply
- USB cable
- User manual

1.3 Overview



- 1 Docking slot for the Digital Pocket Memo
- 2 Green LED indicates that the Digital Pocket Memo batteries are recharging
- 3 Yellow LED indicates that dictation files are being transferred from the Digital Pocket Memo to the PC
- 4 Power supply socket
- 5 Mini-USB socket for connection to the PC

2 Installation

- 1 Connect the Philips power supply to the main power supply.
- 2 Connect the docking station to the Philips power supply.
- 3 Connect the docking station to a free USB socket using the supplied USB cable.


3 Operation


3.1 Recording directly to the PC from the docking station

- 1 Start the recording application on your PC.
- 2 Make sure that the docking station is connected to the PC with the USB cable.
- 3 Switch on the Digital Pocket Memo and insert it into the docking slot of the docking station and press it down firmly until it locks.
- 4 When in the docking station, the Digital Pocket Memo operates like a USB microphone, and records directly to the PC.

3.2 Recharging the batteries of the Digital Pocket Memo


- 1 Make sure that the docking station is connected to the mains power supply with the Philips power supply.
- 2 Insert the Digital Pocket Memo into the docking slot of the docking station and press it down firmly until it locks. The green LED lights up, indicating that the batteries of the Digital Pocket Memo are being recharged in fast recharge mode.
- 3 Use the Digital Pocket Memo from the docking station, or switch it off when not being used.
- 4 When the green LED blinks, recharging is complete and you can remove the Digital Pocket Memo from the docking slot.


 **Note:** The Digital Pocket Memo can become warm during fast recharging.

-  **Tip:** If your Digital Pocket Memo supports fast recharging through the USB cable, you do not need to use the power supply. The connected PC must support the USB specification (500mA) and needs to be on during the charging process.

3.3 Transferring dictation files to a PC


- 1** Make sure that the software application is running on the PC.
- 2** Make sure that the docking station is connected to the PC with the USB cable.
- 3** Switch on the Digital Pocket Memo by moving the On/Off switch to the **ON** position.
- 4** Insert the Digital Pocket Memo into the docking slot of the docking station and press it down firmly until it locks.
- 5** Depending on the device and software settings, the file transfer either starts automatically (to a predefined destination path) or needs to be activated through the software application.
- 6** When the files have been successfully transferred, the Digital Pocket Memo will indicate to disconnect, and you can remove the Digital Pocket Memo from the docking station.


-  **Important:** Do not remove or switch off the Digital Pocket Memo while the file transfer is in progress, otherwise your dictation files may be damaged.

-  **Note:** See the Digital Pocket Memo User Manual for detailed information on operating the Digital Pocket Memo.

Disclaimer and Notices

Philips performs extensive testing with the most popular configurations. However, since PC add-ons and device drivers are updated continually, conflict-free operation cannot be guaranteed.

 The CE mark confirms that the device corresponds to the relevant guidelines of the European Union.

 The cardboard used for packaging can be recycled. This electronic device contains recyclable material.