

PHILIPS

SpeechMike

Premium Air

SMP4000



User manual

Table of contents

1	Important	3
	Safety instructions	3
	Cleaning and disinfection	4
	Disposal of your old product	4
	About this user manual	4
	Symbols used	4
2	Your SpeechMike Premium Air	5
	Product highlights	5
	What's in the box	5
	Overview of your SpeechMike	6
3	Get started	8
	Charging the battery	8
	Charge via USB power supply unit	8
	Charge via docking station	8
	Charge via computer	9
	Learn about the battery status	9
	Turn the device on and off	9
	Pairing	10
	Learn about wireless technology	10
	Going out of range	11
	Idle mode	11
	Locate your docking station	11
	Resetting the wireless connection	11
4	Use your SpeechMike Premium Air	12
	Create a recording	12
	Customize your SpeechMike	12
	Customize SpeechMike buttons and settings	12
	Use application shortcuts with SpeechControl software	13
	Button modes	15
	Switch between button modes	15
	Hands-free dictating with a Philips foot control	15
	Button assignment of Philips foot controls	17
	Upgrading the firmware	17
5	Troubleshooting	18
	LED colors and meanings	20
6	Technical data	21

1 Important

Do not make any adjustments and modifications that are not described in this manual. Follow all safety instructions to ensure proper operation of the device. The manufacturer assumes no liability for damages resulting from non-compliance with the safety instructions.

Safety instructions

- Protect the device from rain and liquids to prevent damage to the device or a short circuit.
- Do not expose the device to excessive heat caused by placing it on a heating device or in direct sunlight.
- Protect the cables from damage by being trapped, particularly at the plugs and where cables exit the housing.
- Do not perform any maintenance operations that are not described in this user manual. Do not disassemble the device into its component parts to carry out repairs. The device may only be repaired in authorized service centers.
- All wireless devices may be susceptible to interference, which could affect performance.
- Back up your data and recordings. The manufacturer's warranty does not cover loss of data resulting from user actions.

Rechargeable built-in battery

- This device contains a built-in Li-polymer battery which should not be replaced by the customer. The battery may only be replaced in authorized service centers or by an authorized Philips partner for dictation equipment.
- Batteries contain substances that may pollute the environment. Used batteries should be disposed of at an official collection point.

Small children

Your device and its enhancements may contain small parts. Keep them out of the reach of small children.

Operating environment

This device meets RF exposure guidelines when used either in front of the mouth or when positioned at least 2.2 cm (0.87 inches) away from the body.

Parts of the device are magnetic. Metallic materials may be attracted to the device. Do not place credit cards or other magnetic storage media near the device or in the docking station because information stored on them may be erased.

Medical device interference

Operation of any radio transmitting equipment may interfere with the functionality of inadequately protected medical devices. Consult a physician or the manufacturer of the medical device to determine if they are adequately shielded from external RF energy or if you have any questions. Switch off your device in health care facilities when any regulations posted in these areas instruct you to do so. Hospitals or health care facilities may be using equipment that could be sensitive to external RF energy.

Implanted medical devices

SpeechMike contains components that emit electromagnetic waves. Electromagnetic waves might interfere with the operation of implanted medical devices, such as pacemakers or implanted cardioverter defibrillators. Manufacturers of medical devices recommend that a minimum separation of 15.3 cm (6 inches) should be maintained between a wireless device and an implanted medical device to avoid potential interference with the medical device. Persons who have such devices should:

- Always keep the wireless device more than 15.3 cm (6 inches) from the medical device when the wireless device is turned on.
- Not carry the wireless device in a breast pocket.
- Turn the wireless device off immediately if there is any reason to suspect that interference is taking place.
- Read and follow the directions from the manufacturer of their implanted medical device.

If you have any questions about using your wireless device with an implanted medical device, consult your health care provider.

Hearing aids

Some digital wireless devices may interfere with some hearing aids. If interference occurs, consult your service provider.

Vehicles

RF signals may affect improperly installed or inadequately shielded electronic systems in motor vehicles such as electronic fuel injection systems, electronic antiskid (antilock) braking systems, electronic speed control systems, and air bag systems. For more information, check with the manufacturer, or its representative, of your vehicle or any equipment that has been added.

Only qualified personnel should service the device or install the device in a vehicle. Faulty installation or service may be dangerous and may invalidate any warranty that may apply to the device.

Check regularly that all wireless device equipment in your vehicle is mounted and operating properly. Do not store or carry flammable liquids, gases, or explosive materials in the same compartment as the device, its parts, or enhancements. For vehicles equipped with an air bag, remember that air bags inflate with great force.

Use in aircraft

Wireless transmitters can negatively affect the operation of other electronic equipment, causing them to malfunction. Turn off your device when you travel in aircraft.

Cleaning and disinfection

- Before cleaning, disconnect all cables from the device.
- To clean the device, use a soft dry cloth.
- To disinfect the device, use products for disinfection of surfaces in clinical areas and patient care equipment, such as surface disinfectant wipes.
- Do not use harsh chemicals or strong detergents.
- Avoid getting moisture in openings.
- Do not rub or strike the surface with anything hard or sharp as this may scratch or damage the surface permanently.

Disposal of your old product

A crossed-out wheeled bin symbol attached to a product indicates that the product is covered by the European Directive 2011/65/EU. Please get informed about the local separate collection system for electrical and electronic products. Please act according to your local rules and do not dispose of your old products with your normal household waste. Correct disposal of your old product helps to prevent potential negative consequences for the environment and human health.



About this user manual

Find a quick overview of your device on the next pages. For detailed description, see the following chapters of this user manual. Read the instructions carefully.

Symbols used



Tip

- This symbol identifies information that helps you to use your device more efficiently and simply.



Note

- This symbol indicates notices which you should observe when handling or operating the device.



Caution

- This symbol warns of damage to the device and possible data loss. Damage can be caused by improper handling.

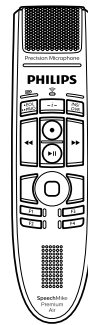
2 Your SpeechMike Premium Air

We are delighted that you have chosen a Philips device. Visit our website for comprehensive support, such as user manuals, software downloads, warranty information and more: www.philips.com/dictation.

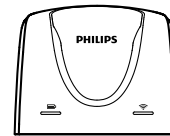
Product highlights

- Wireless recording and playback
- Wireless charging
- Long-lasting battery
- Superior recording quality
- Noise-canceling microphone
- Ergonomic design
- Antimicrobial housing

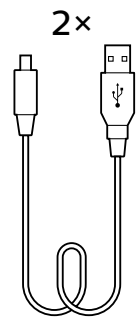
What's in the box



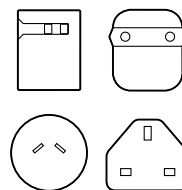
Recorder



Docking station



Micro USB cable

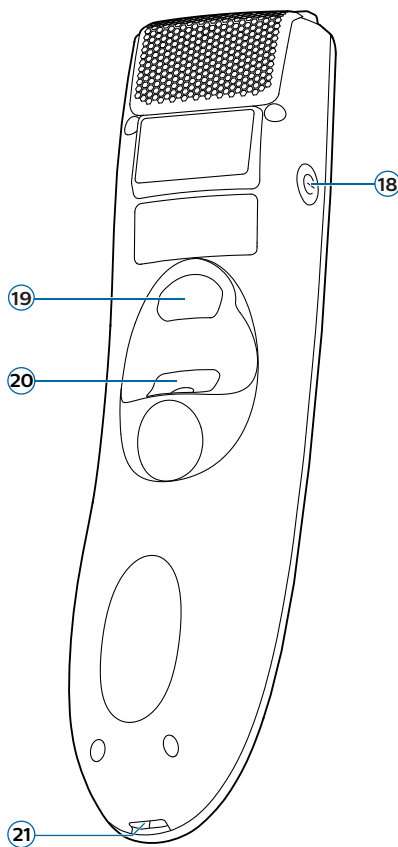
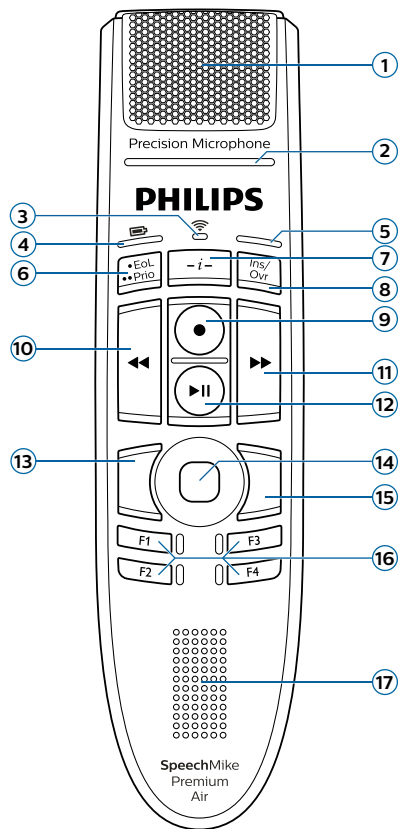


Power supply unit and outlet adapters



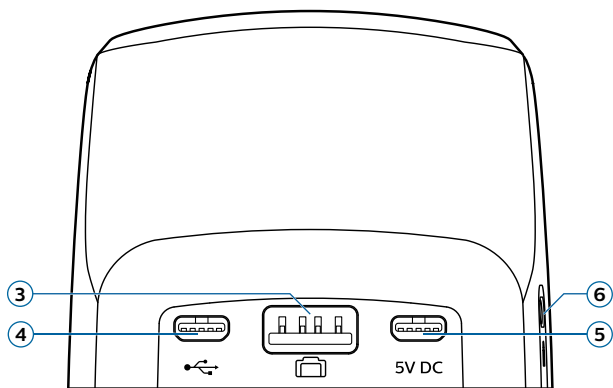
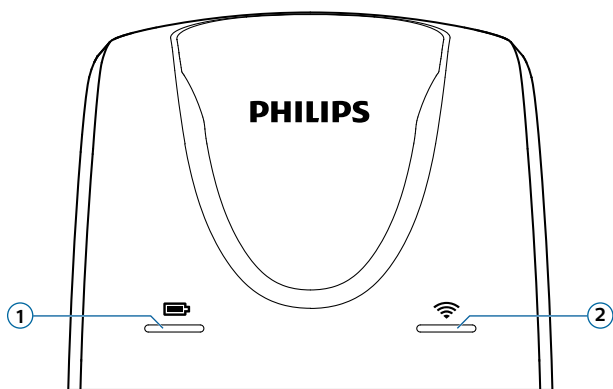
Quick start guide

Overview of your SpeechMike



- ① Microphone
- ② Record LED
- ③ Wireless connection LED
- ④ Battery/command LED
- ⑤ Insert/overwrite LED; Button mode LED
- ⑥ End-of-letter/priority button
- ⑦ Instruction button
- ⑧ Insert/overwrite button
- ⑨ Record button
- ⑩ Rewind button
- ⑪ Fast forward button
- ⑫ Play/pause button
- ⑬ Left mouse button
- ⑭ Touch navigation/left mouse button
- ⑮ Right mouse button
- ⑯ Programmable function buttons
- ⑰ Speaker
- ⑱ Power button
- ⑲ Command button
- ⑳ Left mouse button
- ㉑ Micro USB port for charging

Overview of the docking station



- ① Charging LED
- ② Wireless connection LED
- ③ Foot control port
- ④ Micro USB port for PC connection
- ⑤ Micro USB port for charging
- ⑥ Kensington Security Slot

3 Get started

! Caution

- Before you connect your SpeechMike, first read the safety instructions (see [Safety instructions](#)).

Charging the battery

Charge the built-in battery before you use the device for the first time or if you haven't used it for an extended time period. If the battery is completely discharged and your device turns off, allow the battery to charge for a while before you turn on the device. A complete recharge cycle takes about 4.5 hours.

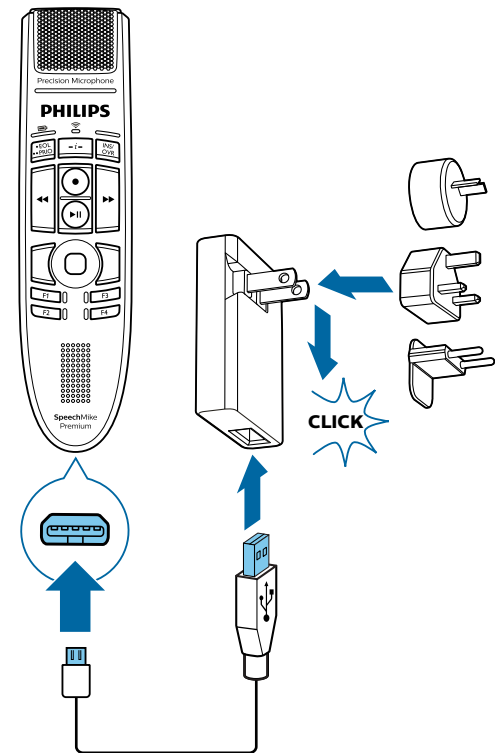
≡ Note

- The included USB power supply unit is a US standard power supply. Depending on your region, you might need to use the supplied outlet adapters to fit regional power outlets.

! Caution

- Use only the original power supply unit. Using a different power supply unit may damage the device.

Charge via USB power supply unit

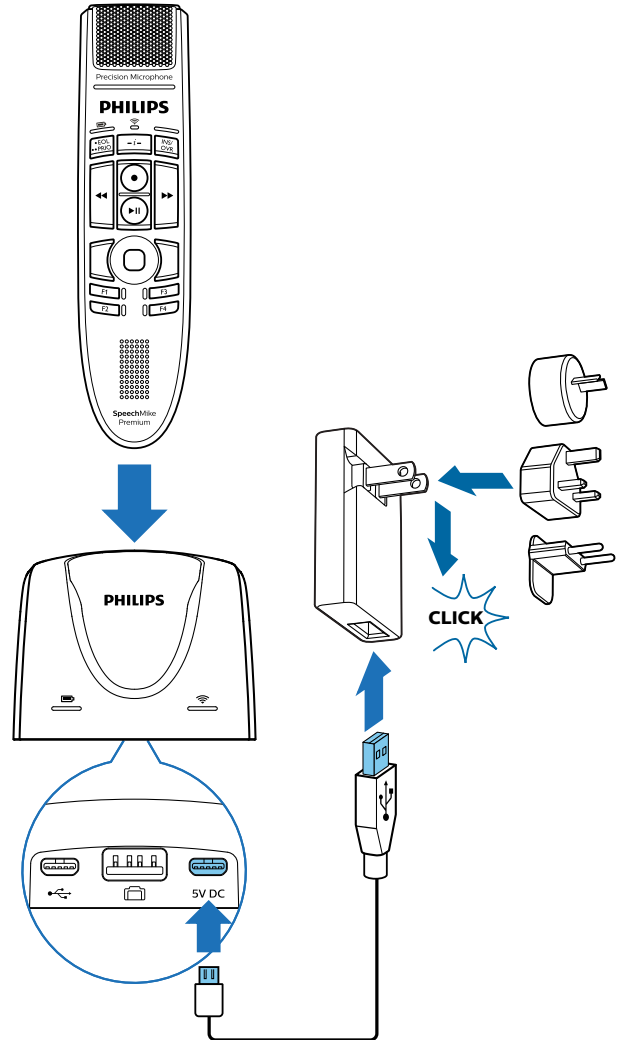


- ↳ During charging, the battery LED glows orange.
- ↳ When charging is complete, the battery LED glows green.

Charge via docking station

≡ Note

- If you charge your device via docking station, make sure that the micro USB connector is connected to the USB port for charging marked with 5V DC.



- ↳ During charging, the battery LED on the SpeechMike and on the docking station glow orange.
- ↳ When charging is complete, the battery LED on the SpeechMike and on the docking station glow green.

! Caution

- Make sure that there are no metallic parts in the docking station, otherwise the charging process is not possible. In this case, the battery LED on the docking station starts flashing red.

≡ Note

- The SpeechMike might get warm when charging it in the docking station. This is normal, especially when you are charging the device for a longer time.

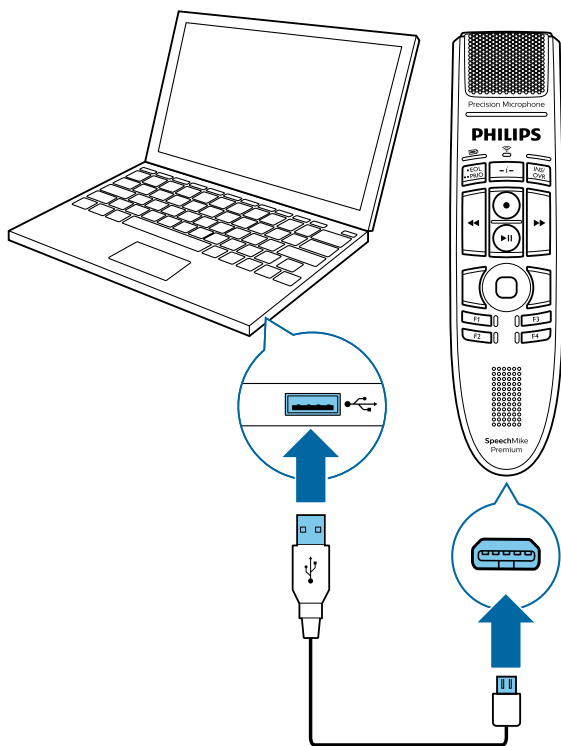
Charge via computer

Before you charge the battery via computer, make sure that your computer is turned on.



Note

- If you charge your device via computer instead of using the power supply unit, the charging speed might slow down due to a lower charging current.
- Recording is not possible if only your SpeechMike is connected to the computer. To make a recording, you also need to connect the docking station to the computer.



- ↳ During charging, the battery LED glows orange.
- ↳ When charging is complete, the battery LED glows green.

Learn about the battery status

Immediately after turning the SpeechMike on or when the SpeechMike is removed from the docking station, the battery LED indicates the battery status. For more information, see [LED colors and meanings](#).

Battery LED	Battery status
green 	more than 6 hours recording time left
orange (only displayed when shortly pressing the ⏻ Power button)	6 hours or less recording time left
red 	2 hours or less recording time left



Tip

- You can always check the battery status of your SpeechMike by shortly pressing the ⏻ Power button.

Turn the device on and off

To turn the device on:

- Shortly place the device into the docking station or press and hold the ⏻ Power button for about 3 seconds.
 - ↳ The SpeechMike beeps.
 - ↳ If the connection with the docking station succeeds, the connection LED on the SpeechMike and on the docking station glow green.

To turn the device off:

- Press and hold the ⏻ Power button for about 3 seconds.
 - ↳ The SpeechMike beeps and the connection LED on the docking station glows red.



Note

- The SpeechMike can't be turned off while it is in the docking station. To turn it off, remove your SpeechMike from the docking station first.

Pairing

Once you have connected your SpeechMike to a docking station, you can dictate wirelessly and use the dictation microphone on different workstations without any further pairing effort.

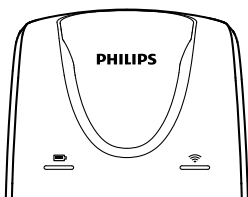
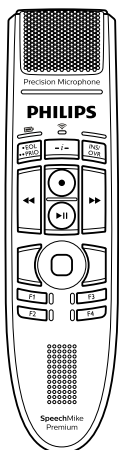


Note

- If you use several docking stations, make sure to keep a minimum distance of 50 cm (18 inches) between each docking station. If the distance is less than 50 cm (18 inches), there might be interferences between the docking stations. In this case, the docking station paired with the SpeechMike can't be found.
- Make sure that the distance between the SpeechMike and the docking station is not more than 5 meters (16 feet). For more information, see [Learn about wireless technology](#).

Pair the SpeechMike and the docking station

- Insert the SpeechMike into the docking station for about 4 seconds.



- ↳ The pairing process starts.
- ↳ When pairing is finished, the wireless connection LED on the SpeechMike and on the docking station glow green.

Change paired devices

If your desired docking station is already connected to a different SpeechMike, the wireless connection LED on this docking station glows green (if the connected device is in range) or red (if the connected device is out of range).

To disconnect this existing connection and pair your own SpeechMike with the desired docking station, proceed as described in [Pair the SpeechMike and the docking station](#).



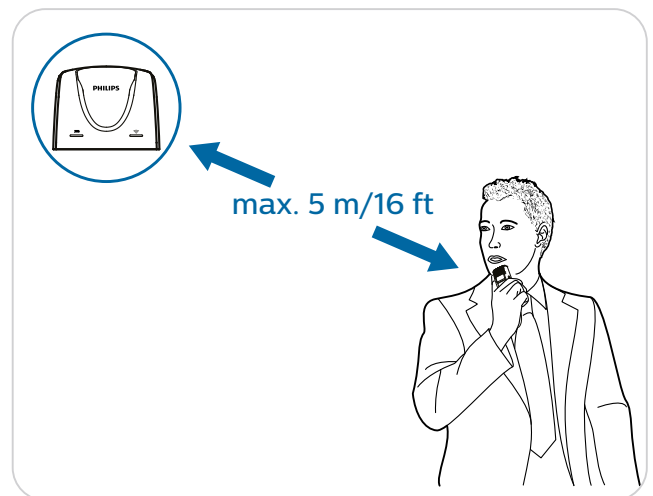
Note

- **Please differentiate between the following two situations:**
 - If the wireless connection between the SpeechMike and the docking station is lost, the connection LED on both devices glows red.
 - If there is a problem with the USB connection of the docking station (e.g. the USB cable is connected to the wrong USB port on the docking station), the connection LED on both devices flashes red.

Learn about wireless technology

The SpeechMike uses wireless technology to establish a connection between the dictation microphone and the docking station.

A wireless connection doesn't require that the SpeechMike and the docking station be in line of sight. However, the maximum distance between the SpeechMike and the docking station should not be more than 5 meters (16 feet). The closer the devices are to each other, the better is the performance. The connection is subject to interference from distance and obstructions or other electronic devices.





Note

- Make sure to keep a minimum distance of 50 cm (18 inches) between the docking station and other wireless devices, such as smartphones or laptops. If the distance is less than 50 cm (18 inches), there might be interferences between the docking station and other wireless devices.

Going out of range

If you are about to leave the reception area and the connection between the docking station and the SpeechMike is being interrupted, a vibrating alert and an orange connection LED will notify you that the wireless connection is unstable.

- ↳ Dropouts during recording may occur leading to quality loss of your audio file.

When the wireless connection is lost, the SpeechMike vibrates and beeps, and the wireless connection LED glows red. If you have a SpeechExec application running on your computer, the software will be stopped. In this case, move closer to the docking station to re-enter the reception area.

- ↳ The connection is reestablished.
- ↳ You will hear a beep sound on the SpeechMike and the wireless connection LED glows green.

Idle mode

After 4 minutes of inactivity, the SpeechMike automatically enters idle mode and the wireless connection LED flashes green. To reactivate the device, simply lift it up or press any button.

If the SpeechMike is not used for more than 10 hours, it automatically turns off to save battery life. To turn the device on again, shortly place it into the docking station or press the ⏻ Power button until the battery LED lights up.



Note

- In idle mode, the connection between the SpeechMike and the docking station is temporarily interrupted. When you reactivate the SpeechMike by lifting it up, the connection is immediately re-established.



Tip

- You can change and customize these default settings with Philips SpeechControl driver and configuration software. Download the software at www.philips.com/dictation. For more information, see [Customize your SpeechMike](#).

Locate your docking station


If there are several docking stations in the room and you don't know which docking station is connected to your device, briefly press the ⏻ Power button on the SpeechMike.

- ↳ The wireless connection LED on the connected docking station flashes green for a few seconds.

If no connected docking station is found, insert the SpeechMike into your desired docking station for about 4 seconds to pair them.

Resetting the wireless connection

If you should encounter problems with your device, for example, the SpeechMike doesn't respond or doesn't connect to the docking station, you can reset the wireless connection.

- 1 Disconnect the docking station from your computer and from the power outlet.
 - ↳ All LEDs on the docking station are off now.
- 2 Press the ⏻ Power button on the SpeechMike for about 20 seconds.
- 3 Connect the docking station to your computer via the supplied USB cable. Make sure you use the USB port for PC connection marked with  on the docking station.
- 4 Place the SpeechMike into the docking station and wait for about 10 seconds.
 - ↳ The SpeechMike should be detected and be automatically paired with the docking station.

4 Use your SpeechMike Premium Air

Note

- Any operations, e.g. recording or configuring your SpeechMike with SpeechControl driver and configuration software, have to be executed with the docking station connected to your computer. Do not connect the SpeechMike directly to the computer via a USB cable for this purpose. Connecting the SpeechMike directly to the computer is only intended for charging the device.

Create a recording

Recording and playback of dictations with the SpeechMike requires dictation software such as Philips SpeechExec to be installed on the computer. When third-party dictation software other than Philips SpeechExec is used, driver software must be installed before connecting the SpeechMike. For more information on recording with the SpeechMike and the Philips SpeechExec software, download the SpeechExec user manual at www.philips.com/dictation.

Note


- For best results, speak clearly and keep the microphone about 10 to 15 cm (4 to 6 inches) away from your mouth.
- Make sure that the distance between the SpeechMike and the docking station is not more than 5 meters (16 feet). For more information, see [Going out of range](#).
- Make sure the docking station is connected to your computer, otherwise recording is not possible.

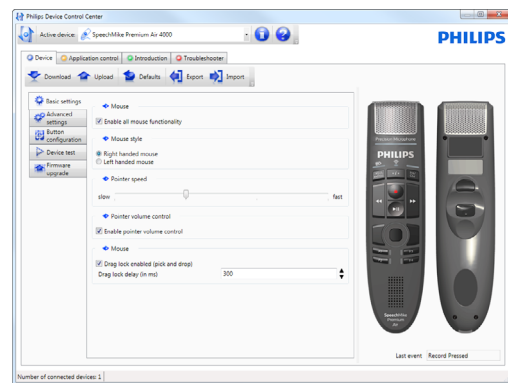
Customize your SpeechMike

Use SpeechControl driver and configuration software to customize your SpeechMike according to your own preferences. The software allows you to assign different functions to each button, enable or disable certain features, and also to start and control applications with the SpeechMike.

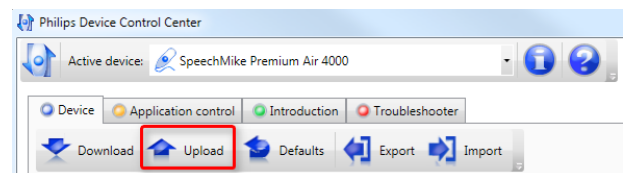
You can download the software for free at www.philips.com/dictation.

Customize SpeechMike buttons and settings

- 1 Make sure that the docking station is connected to the computer via the supplied USB cable and that the wireless connection to the SpeechMike is established.
- 2 If the option to start SpeechControl driver and configuration software was automatically selected during installation, open the program by clicking the  icon in the notification area of the Windows task bar. To manually start the program, open the Windows start menu in Windows and select **All Programs > Philips Speech Control > Philips Device Control Center**.
↳ The current settings are automatically downloaded from the connected SpeechMike.
- 3 On the **Device** tab, configure device settings and select the function to be assigned to each button.



- 4 Click the **Upload** button to save the new settings on the device.





Note

- Settings can't be changed when the battery LED glows red. Charge the SpeechMike before changing the settings.
- The SpeechMike can be reset to its factory default configuration by clicking the **Defaults** button in the software. Click the **Upload** button to save the default settings.





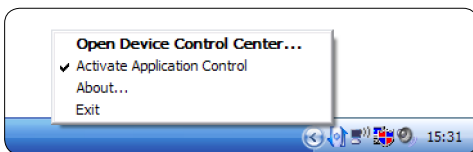
Tip

- To test settings and button functions, use the **Device test** section on the **Device** tab.

Use application shortcuts with SpeechControl software

Philips SpeechControl software includes pre-installed profiles that make the SpeechMike ready for immediate operation with Dragon NaturallySpeaking speech recognition software and Microsoft Powerpoint. You can also program additional profiles for other applications.

- 1 If the option to start SpeechControl driver and configuration software was automatically selected during installation, the application icon  appears in the notification area of the Windows task bar. To manually start the program, open the Windows start menu in Windows and select **All Programs > Philips Speech Control > Philips Device Control Center**.
- 2 Right-click on the application icon  in the notification area of the Windows task bar and make sure that the option **Activate Application Control** is enabled. If this option is disabled, the configured settings and buttons will not function for any of the target applications.



Note

- If you use Philips SpeechExec software, exit the software when using application shortcuts. This will prevent unintentional recording when controlling other applications.

Default profile

The default profile is applied automatically when there is no profile assigned to an application in focus. This profile is set up to control Dragon NaturallySpeaking with your SpeechMike. The following settings are defined:

SpeechMike button	Assigned shortcut
● Record	Record (push to dictate)
▶ Play/Stop	Play from cursor position
◀◀ Rewind	Move cursor backwards
▶▶ Fast forward	Move cursor forwards
•EOL/••PRIO	Mark backwards
INS/OVR	Open correction window

Powerpoint profile

Use this profile to control Powerpoint presentations with the SpeechMike. The following settings are defined:

SpeechMike button	Assigned shortcut
● Record	Black screen
▶ Play/Stop	White Screen
◀◀ Rewind	Go to previous slide
▶▶ Fast forward	Go to next slide
•EOL/••PRIO	End slide show
INS/OVR	Show/hide cursor




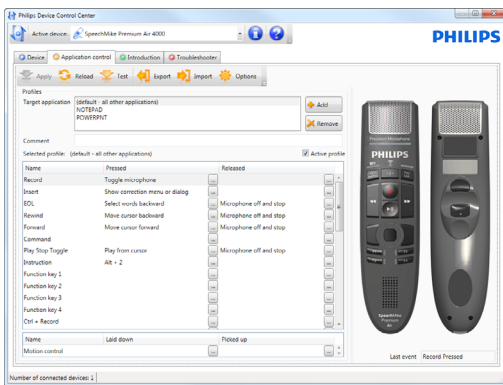
Note

- It is possible that not all assigned shortcuts work properly, since shortcuts can differ among versions and languages.

Program a custom profile

It is possible to program shortcuts for other applications to control application functions with the buttons of the SpeechMike.


- 1 Make sure that the docking station is connected to the computer via the supplied USB cable and that the wireless connection to the SpeechMike is established.
- 2 If the option to start SpeechControl driver and configuration software automatically was selected during installation, open the program by clicking the  icon in the notification area of the Windows task bar. To manually start the program, open the Windows start menu in Windows and select **All Programs > Philips Speech Control > Philips Device Control Center**.
- 3 On the **Application control** tab, click the **Add** button to create a new profile.

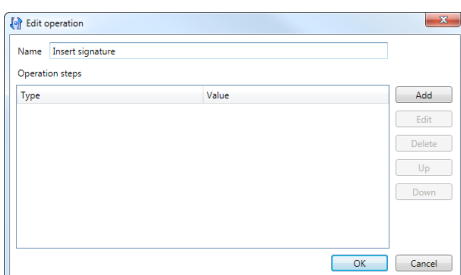


- 4 Browse and select the desired application and click on **Open**.
↳ A profile for the selected application is added to the list of profiles.

Note

- Exit the target application during configuration. Open the application when the device configuration settings are saved.

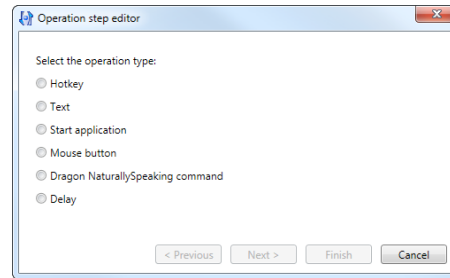
- 5 Select a button from the button column and click the  icon to assign a shortcut. You can assign different shortcuts for pressing and releasing a button.
↳ The shortcut editor window is displayed.



- 6 Enter a name for the shortcut and click the **Add** button to add an operation for the shortcut.
↳ The shortcut selection window is displayed.

The following options are available:

- **Hotkey:** Assign a keyboard shortcut
- **Text:** Enter the text to be inserted when a button on the SpeechMike is pressed
- **Start application:** Start an application by pressing a button on the SpeechMike
- **Mouse button**
- **Dragon NaturallySpeaking command**
- **Delay**



- 7 You can add one operation or a sequence of operations for every shortcut.

- 8 Click the **Apply** button to save the new settings.

Note

- Philips SpeechControl driver and configuration software can't be used to program application shortcuts for Philips SpeechExec workflow software. Shortcuts for Philips SpeechExec can be configured in the **General settings** menu of SpeechExec. For more information, see the SpeechExec application help.

Tip

- Application control configuration settings can be exported to files and be imported later to apply the same configuration settings on several computers.

Button modes

With your SpeechMike, you can control various applications on your computer or in your browser. You have three different button modes available for this purpose: the Standard mode, the Secured Dragon mode, and the Browser mode. You can change the button assignment for each mode in SpeechControl software. For more information, see [Customize SpeechMike buttons and settings](#).

Standard mode

The Standard mode is the default mode of your SpeechMike. In this mode, each button on your SpeechMike is assigned to a command. In SpeechControl software, you can define which commands should be executed by pressing or releasing a desired button on your SpeechMike in order to control various computer applications.

Secured Dragon mode

Assign a button on your SpeechMike to a shortcut you are using on your computer in order to control various computer applications. In SpeechControl software, you can define which commands should be executed by pressing a desired button on your SpeechMike.

In the Secured Dragon mode, you can also operate Dragon NaturallySpeaking speech recognition software by using the pre-configured Dragon shortcuts.

Browser mode

Assign a SpeechMike button to a shortcut or a command in your browser in order to control various browser-based dictation applications. In SpeechControl software, you can define which commands should be executed by pressing a desired button on your SpeechMike.

Switch between button modes

To switch between the Standard mode and the Secured Dragon mode:

- Press the End-of-letter/priority (·EoL/·Prio) button and the Insert/overwrite (INS/OVR) button simultaneously for three seconds.
 - ↳ The LED of both buttons shortly lights up orange.

To switch to the Browser mode:

- Press the function buttons F1 and F4 simultaneously for three seconds.
 - ↳ The End-of-letter/priority (·EoL/·Prio) LED and the Insert/overwrite (INS/OVR) LED shortly light up red.

To switch from the Browser mode to the Standard mode:

- Press the End-of-letter/priority (·EoL/·Prio) button and the Insert/overwrite (INS/OVR) button simultaneously for three seconds.



Tip

- To check your current mode, shortly press the End-of-letter/priority (·EoL/·Prio) button and the Insert/overwrite (INS/OVR) button simultaneously. The LED of both buttons indicates the mode:
 - Standard mode: no LED on
 - Secured Dragon mode: orange LED
 - Browser mode: red LED

Hands-free dictating with a Philips foot control

If you connect a Philips foot control, you can control the dictation functions with your foot control to have your hands free for your work.

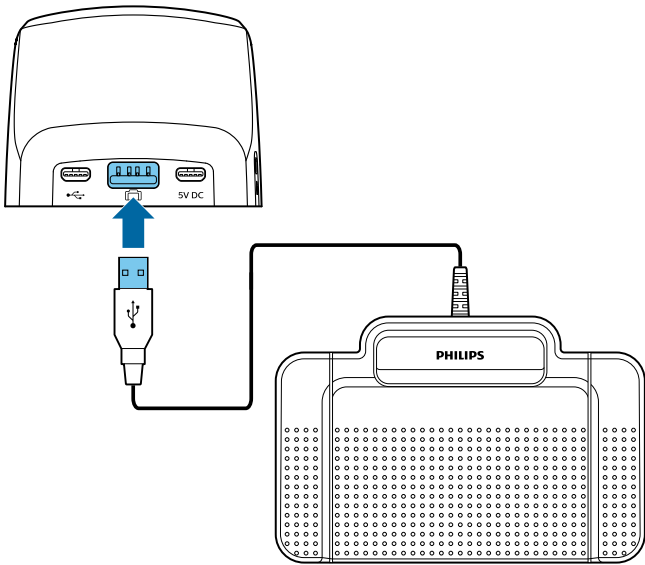


Note

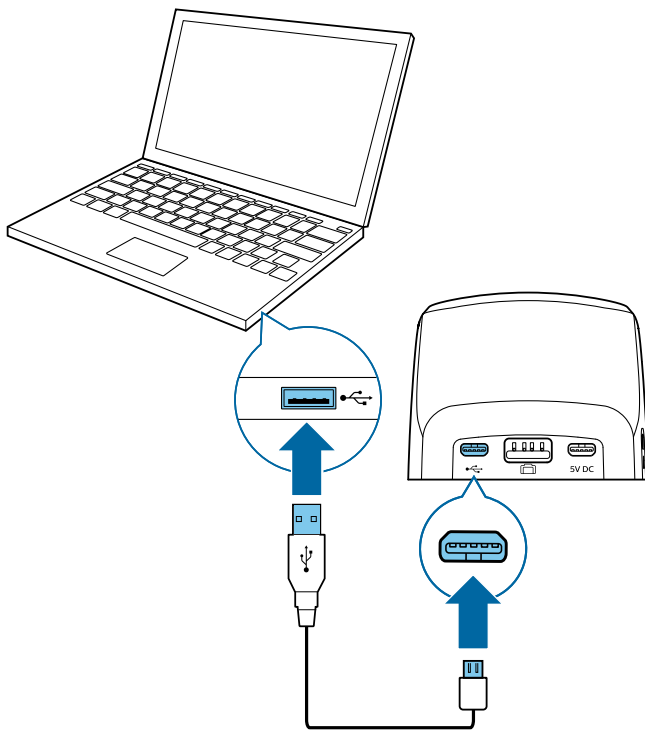
- Before you connect the foot control to the docking station, make sure that the docking station is neither connected to the computer nor to the power outlet, as otherwise the foot control might not be detected.
- Recording and playback of dictations with a Philips foot control requires dictation software such as Philips SpeechExec to be installed on the computer. When third-party dictation software other than Philips SpeechExec is used, driver software must be installed before connecting the SpeechMike and the foot control.
- For best recording results during hands-free dictation, you will probably have to adjust the recording volume. You can set the recording volume in the audio settings of your recording application, e.g. Philips SpeechExec dictation software or Dragon NaturallySpeaking speech recognition software.

To connect a foot control for hands-free dictation:

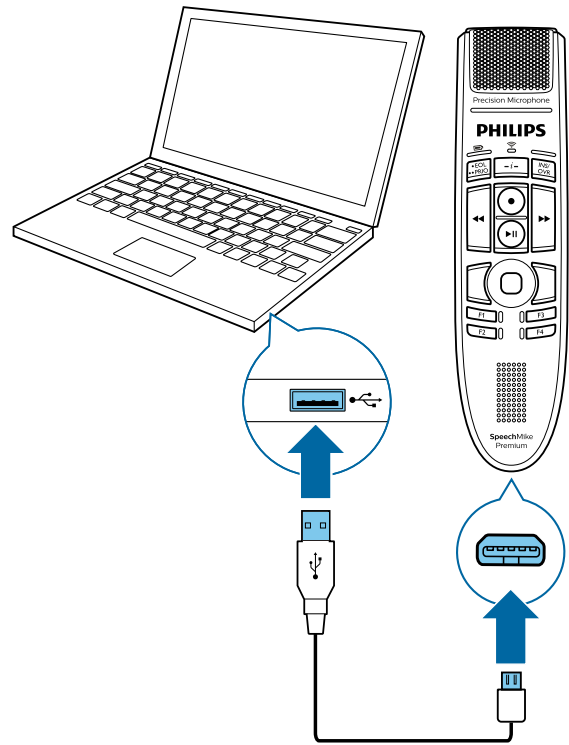
- 1 Connect a Philips ACC2300 series foot control to the docking station of your SpeechMike.



- 2 Connect the docking station to your computer.



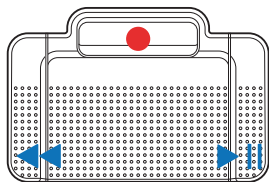
- 3 Connect your SpeechMike to your computer.



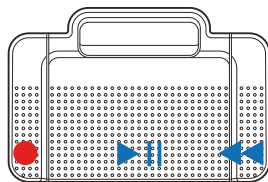
Button assignment of Philips foot controls

Foot control ACC2310 / ACC2320

The Philips foot controls 2310 and 2320 have three pedals. By default, the foot controls 2310 and 2320 have the following configuration:



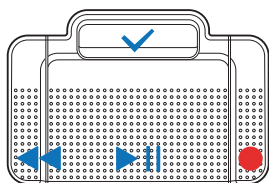
ACC2310



ACC2320

Foot control ACC2330

The Philips foot control 2330 has four pedals. By default, the foot control 2330 has the following configuration:



ACC2330



Note

- The function of each foot control pedal matches the function that is programmed for the corresponding button on the SpeechMike. If you would like to change the function of a pedal, you must first change the function of the corresponding button on the SpeechMike. You can change the button assignment in SpeechControl driver and configuration software. Download the software for free at www.philips.com/dictation.

Upgrading the firmware

Your SpeechMike is controlled by an internal program called firmware. As a part of ongoing product maintenance, the firmware is upgraded and errors are corrected.


It is possible that a newer version (an 'update') of the firmware has been released since you purchased the device. In this case, you can easily update your device to the latest version.



Note


- A firmware upgrade is only possible if the following preconditions are met:

- The SpeechMike has at least 50% (approx. 12 hours) battery power left.
- The SpeechMike is not in idle mode.
- Ideally, the SpeechMike is placed in the docking station.
- There is no recording or playback running.

- 1 Download the firmware update for your SpeechMike model at www.philips.com/dictation, or use the firmware upgrade function in SpeechControl driver and configuration software.
- 2 Connect the docking station to a power outlet and to the computer by using the supplied USB cables and the power supply unit. Then place the SpeechMike into the docking station.
- 3 If the option to start SpeechControl driver and configuration software automatically was selected during installation, open the program by clicking the  icon in the notification area of the Windows task bar. To manually start the program, open the Windows start menu in Windows and select **All Programs > Philips Speech Control > Philips Device Control Center**.
- 4 On the **Device** tab, click on **Firmware upgrade**.
- 5 Click the **Import** button and select the folder with the firmware files to be imported.
- 6 Click the **Upgrade** button to install the new firmware.
 - ↳ The firmware upgrade takes about 30 seconds.
 - ↳ When the firmware upgrade is finished, the SpeechMike and the docking station are shortly disconnected and the wireless connection LED on both devices starts flashing red.
 - ↳ The pairing process starts automatically. When the connection is re-established, the wireless connection LED on the SpeechMike and the docking station glow green.

5 Troubleshooting

Find the most common problems you could encounter with the SpeechMike in the following table. If you are unable to solve the problem with the information below, contact the supporting Philips partner you purchased the device from.











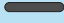



Problem	Cause	Solution
The operating system stops responding after restart.	<ul style="list-style-type: none"> Using the SpeechMike together with certain USB hubs may cause the operating system to stop responding when the computer is started. 	<ul style="list-style-type: none"> Unplug the SpeechMike before starting the PC and reconnect it afterwards. We recommend replacing the USB hub or connecting your SpeechMike directly to the USB port of the computer.
The SpeechMike is completely without function.	<ul style="list-style-type: none"> Some computer providers limit the output power of USB ports to 100 mA. These ports may not provide enough power for the SpeechMike to function properly. 	<ul style="list-style-type: none"> Use the supplied power supply unit. Connect the SpeechMike via a self-powered hub.
The SpeechMike doesn't respond to input commands.	<ul style="list-style-type: none"> The wireless connection to the docking station may be interrupted. The USB cable is connected to the wrong USB port on the docking station (i.e. USB port for charging marked with 5V DC). Your computer is in sleep mode. The battery is empty. 	<ul style="list-style-type: none"> Check the wireless connection. Move closer to the docking station. Start the pairing process as described in the chapter Pairing. Disconnect the USB cable from the docking station and connect it to the USB port for PC connection marked with  on the docking station. Wake your computer from sleep mode. Charge the SpeechMike. If none of the solutions provided above solves the problem, reset the wireless connection. For more information, see Resetting the wireless connection.
The SpeechMike doesn't switch on.	<ul style="list-style-type: none"> The battery is very low. 	<ul style="list-style-type: none"> Charge the SpeechMike.
The SpeechMike doesn't connect to the docking station.	<ul style="list-style-type: none"> Pairings may have been reset or the SpeechMike has been previously paired with another docking station. 	<ul style="list-style-type: none"> Start the pairing process as described in the chapter Pairing. If re-pairing doesn't solve the problem, reset the wireless connection. For more information, see Resetting the wireless connection.
The SpeechMike is connected to the computer but sound will play on the computer's speaker only.	<ul style="list-style-type: none"> SpeechMike is not selected as the default playback device. 	<ul style="list-style-type: none"> In the Windows sound settings, select SpeechMike as the default playback device.

Problem	Cause	Solution
The SpeechMike doesn't record sound.	<ul style="list-style-type: none"> The input level is too low because of the wrong recording source. 	<ul style="list-style-type: none"> In the Windows sound settings, select SpeechMike as the default recording device.
My computer can't detect the foot control.	<ul style="list-style-type: none"> The docking station was connected to the computer and/or to the power outlet before you connected the foot control. 	<ul style="list-style-type: none"> Disconnect the foot control from the docking station and the docking station from the computer and/or power outlet. Then reconnect the foot control to the docking station first and afterwards connect the docking station to the computer and/or to the power outlet.
The connection between the SpeechMike and the docking station is being interrupted.	<ul style="list-style-type: none"> The docking station is connected to a low-power USB port on your computer. 	<ul style="list-style-type: none"> Additionally, connect the docking station via the supplied USB cable to the power supply unit and the USB port for charging (marked with 5V DC). For more information, see Charge via docking station.







LED colors and meanings

The LEDs on your SpeechMike and the docking station indicate the connection and battery status as well as problems that might occur when using your SpeechMike and the docking station. Use the following table to learn more about the connection status, battery status, and potential problems:


Connection LED









SpeechMike	Docking station	Meaning
green 	green 	· connection OK
orange + vibration 	green 	· connection bad
red + vibration 	red 	· connection interrupted
red flashing 	red flashing 	· wireless connection OK but no USB connection
short red flashing 	short red flashing after USB connection 	· restoring USB connection; will connect shortly
off 	red 	· SpeechMike power off
red 	red 	· no pairing

Battery LED (SpeechMike in docking station)

SpeechMike	Docking station	Meaning
green 	green 	· battery fully charged
orange 	orange 	· battery charging
off 	off 	· no power supply

Battery LED (SpeechMike out of docking station and switched on)

Docking station	Meaning
green 	· power connected

SpeechMike	Meaning
green—for 5 seconds after turned on 	· battery full
off 	· battery full
green—for 5 seconds* 	· battery full
*after shortly pressing the  Power button	
orange—for 5 seconds* 	· battery low, 6 hours or less recording time left
*after shortly pressing the  Power button	
red 	· battery low, 2 hours or less recording time left
red flashing 	· battery empty

6 Technical data

Specifications

- Material: high-class polymers with antimicrobial additive
- Color: dark grey pearl metallic
- Dimensions (W × D × H):
45 × 175 × 32 mm (1.8 × 6.9 × 1.3")
- Weight:
120 g (4.2 oz)

Connectivity

- Wireless technology: 2.4 GHz ISM Band
- Modulation: 8 FSK digital
- Maximum range: up to 5 m (16 ft)
- USB: micro USB 2.0

Audio

- Microphone type: electret condenser microphone
- Characteristic: uni-directional
- Frequency response: 200 – 12,000 Hz
- Microphone sensitivity: -37 dBV
- Signal-to-noise ratio: > 70 dBA

Sound

- Speaker type: built-in 30 mm round, dynamic speaker
- Acoustic frequency response: 300 – 7500 Hz
- Output power: > 200 mW

Power

- Battery type: built-in rechargeable Li-polymer battery
- Battery capacity: 800 mAh
- Battery lifetime: up to 24 hours of recording
- Standby time: > 100 hours
- Charging time: 4.5 hours

Docking station

- Dimensions (W × D × H):
82 × 85 × 60 mm (3.2 × 3.3 × 2.4")
- Docking station: 276 g (9.7 oz)
- USB: micro USB for charging
micro USB for data transfer
USB type A for foot control
- Kensington Security Slot

Green specifications

- Compliant to 2011/65/EU (RoHS)
- Lead-free soldered product

Operation conditions

- Temperature: 5° – 45° C / 41° – 113° F
- Humidity: 10 % – 90 %

System requirements for Philips SpeechControl software

- Processor: Intel dual core or equivalent AMD processor, 1 GHz or faster
- RAM: 2 GB (32 bit)/4 GB (64 bit)
- Hard-disk space: 30 MB for SpeechControl software, 4.5 GB for Microsoft .NET Framework
- Operating system: Windows 10 (64 bit), Windows 8.1/7 (32/64 bit), Windows Server 2012 (64 bit), Windows Server 2008 R2 (32/64 bit), macOS 10.11/10.12
- One free USB port

Accessories (optional)

- Philips SpeechMike Premium Air docking station ACC4000
- Philips power supply LFH9146

Open source software

Products mentioned in this manual may contain open source software.

Speech Processing Solutions GmbH hereby offers to deliver, upon request, a copy of the complete corresponding source code for the copyrighted open source software packages used in this product for which such offer is requested by the respective licenses. This offer is valid up to three years after product purchase. To obtain the source code, please write in English to: info@speech.com.

FCC Warning Statement



Changes or modifications not expressly approved by the party responsible for compliance could void the user's authority to operate the equipment.

This equipment has been tested and found to comply with the limits for a Class B digital device, pursuant to Part 15 of the FCC Rules. These limits are designed to provide reasonable protection against harmful interference in a residential installation. This equipment generates uses and can radiate radio frequency energy and, if not installed and used in accordance with the instructions, may cause harmful interference to radio communications. However, there is no guarantee that interference will not occur in a particular installation. If this equipment does cause harmful interference to radio or television reception, which can be determined by turning the equipment off and on, the user is encouraged to try to correct the interference by one or more of the following measures:

- Reorient or relocate the receiving antenna.
- Increase the separation between the equipment and receiver.
- Connect the equipment into an outlet on a circuit different from that to which the receiver is connected
- Consult the dealer or an experienced radio/TV technician for help.

Neither Speech Processing Solutions GmbH nor its affiliates shall be liable to the purchaser of this product or third parties with respect to claims for damages, losses, costs or expenses incurred by purchaser or third parties as a result of an accident, misuse or abuse of this product or unauthorized modifications, repair, modification of the product or failure to meet the operating and maintenance instructions provided by the manufacturer.

This user manual is a document with no contractual nature. We accept no liability for changes, mistakes or printing errors.



Issue date 2017-11-09
Version 1.0

© 2017 Speech Processing Solutions GmbH. All rights reserved.

Specifications are subject to change without notice. Philips and the Philips shield emblem are registered trademarks of Koninklijke Philips N.V. and are used by Speech Processing Solutions GmbH under license from Koninklijke Philips N.V. All trademarks are the property of their respective owners.

www.philips.com/dictation